

Transmit Control Codes

Overview

Indigo includes the ability to transmit special [Control Codes/Control Characters](#) to a connected device/host.

The following is a listing of the control codes built into Indigo menus. Most of these control codes can be also transmitted using the associated hotkey.

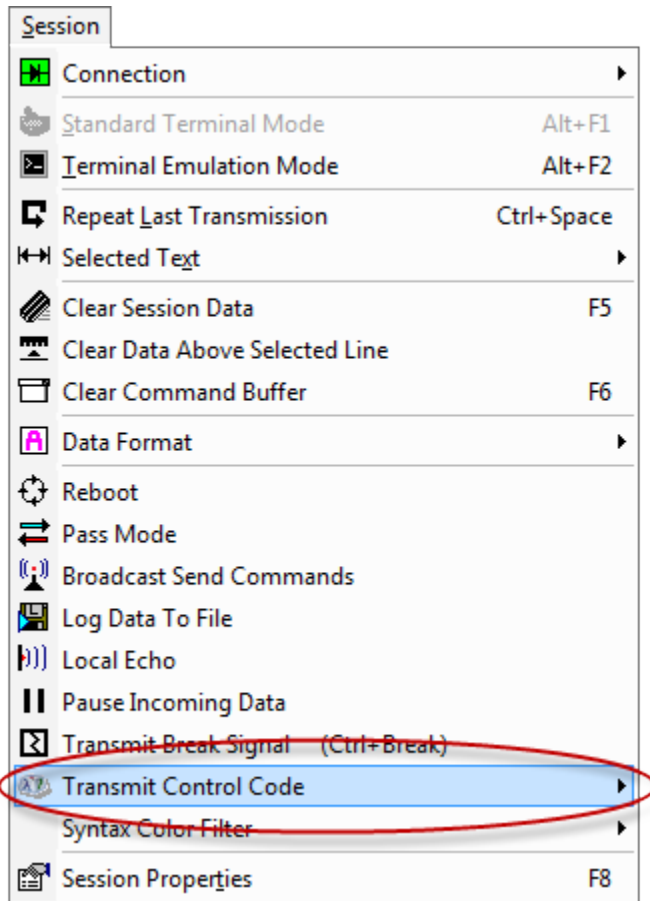
CTRL-@	NULL (null)	
CTRL-A	SOH (start of heading)	Ctrl+Shift+A
CTRL-B	STX (start of text)	Ctrl+Shift+B
CTRL-C	ETX (end of text)	Ctrl+Shift+C
CTRL-D	EOT (end of transmission)	Ctrl+Shift+D
CTRL-E	ENQ (enquiry)	Ctrl+Shift+E
CTRL-F	ACK (acknowledge)	Ctrl+Shift+F
CTRL-G	BELL (bell)	Ctrl+Shift+G
CTRL-H	BS (backspace)	Ctrl+Shift+H
CTRL-I	TAB (horizontal tab)	Ctrl+Shift+I
CTRL-J	LF (linefeed)	Ctrl+Shift+J
CTRL-K	VT (vertical tab)	Ctrl+Shift+K
CTRL-L	FF (form feed)	Ctrl+Shift+L
CTRL-M	CR (carriage return)	Ctrl+Shift+M
CTRL-N	SO (shift out)	Ctrl+Shift+N
CTRL-O	SI (shift in)	Ctrl+Shift+O
CTRL-P	DLE (data link escape)	Ctrl+Shift+P
CTRL-Q	DC1 (go) / XON	Ctrl+Shift+Q
CTRL-R	DC2	Ctrl+Shift+R
CTRL-S	DC3 (stop) / XOFF	Ctrl+Shift+S
CTRL-T	DC4	Ctrl+Shift+T
CTRL-U	NAK (negative acknowledge)	Ctrl+Shift+U
CTRL-V	SYN (synchronous idle)	Ctrl+Shift+V
CTRL-W	ETB (end transmission block)	Ctrl+Shift+W
CTRL-X	CAN (cancel)	Ctrl+Shift+X
CTRL-Y	EM (end of medium)	Ctrl+Shift+Y
CTRL-Z	SUB (substitute / suspend)	Ctrl+Shift+Z
CTRL-[ESC (escape)	
CTRL-\	FS (field separator)	
CTRL-]	GS (group separator)	
CTRL-^	RS (record separator)	
CTRL-DEL	US (unit separator)	Ctrl+Shift+Delete

✓ **Tip**

Control codes can also be transmitted to the terminal session using the native CTRL-KEY combinations when using the [Terminal Emulation view mode](#) and when the keyboard input is being redirected to the terminal session. Control code can also be constructed and transmitted using the [Advanced Send Command](#) syntax.

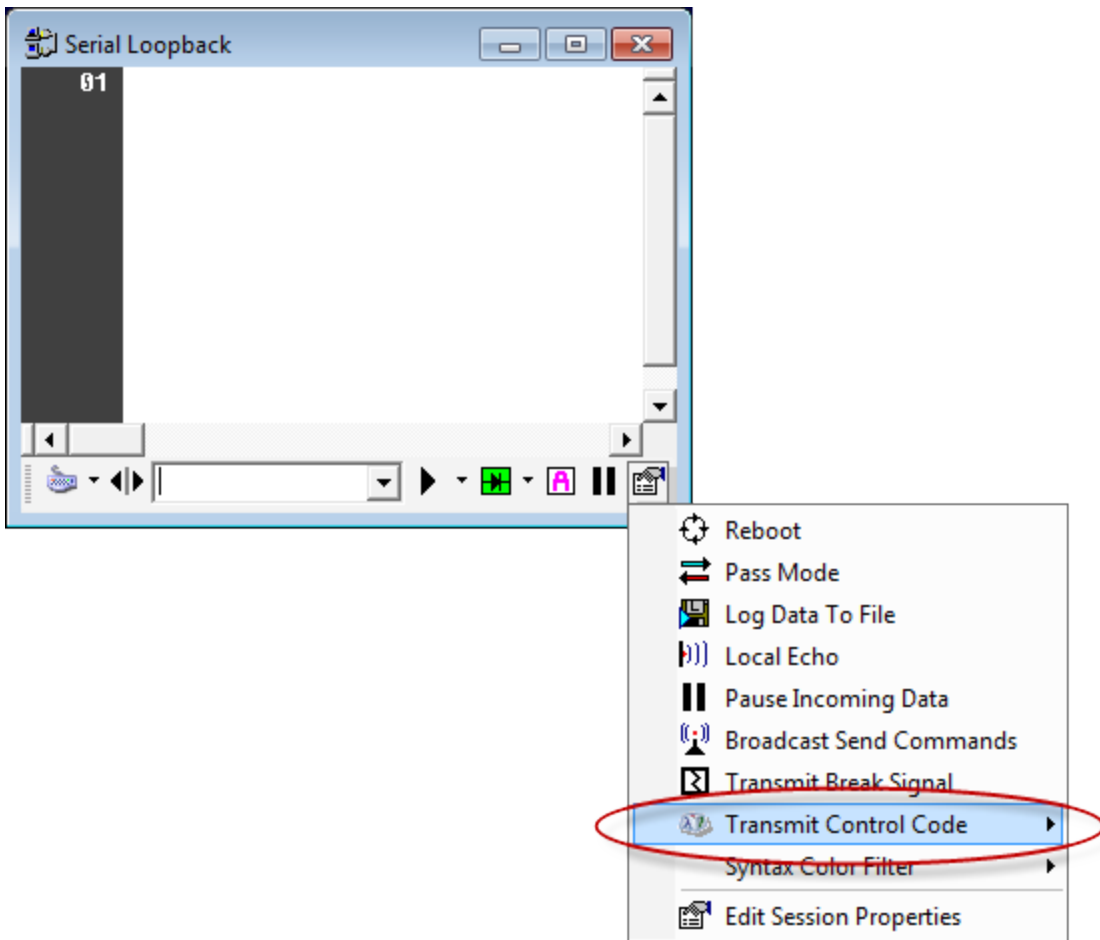
Session Menu

Control Codes/Characters can be transmitted to a terminal session by selecting an item from the the *Transmit Control Code* sub-menu from the application [Session Menu](#).



Session Toolbar

Control Codes/Characters can be transmitted to a terminal session by selecting an item from the the *Transmit Control Code* sub-menu from the session's [toolbar menu](#).



Session Context Menu

Control Codes/Characters can be transmitted to a terminal session by selecting an item from the the *Transmit Control Code* sub-menu from the session's right-click [context menu](#).

