

Licensing

This section describes the licensing terms for Indigo Terminal Emulator and the licensing activation/registration and transfer procedures.

- [Licensing Terms](#)
- [License Registration / Activation](#)
 - [Option 1: Online Registration](#)
 - [Option 2: Manual Registration](#)

Licensing Terms

Indigo Terminal Emulator is licensed to each computer it is installed on.

A single license may only be installed on a single computer.

License transfer is available for hardware replacement and/or system upgrades.

License Registration / Activation

Screencast

A screencast of the licensing and activation procedure is available. [Click here to see the video.](#)

A quick and easy online registration method is included in Indigo.

Upon purchasing Indigo, an email will be automatically sent that includes a license key.

Once licensed, Indigo will provide full functionality and web update capabilities.

Indigo provides two options for activating your license:

- Online Registration
- Manual Registration

Option 1: Online Registration

The easiest method is to use the online registration with license key option.

When prompted, select the first licensing option:

"Activate software license with license key"



Indigo Terminal Emulator
Version 3.0.145 (BETA)

shadeBlue, LLC.
Copyright © shadeBlue, LLC 2011

Register:

How would you like to register your Indigo license?

- Activate software license with license key
This license key is provided at time of purchase.
(requires Internet connection)
- Enter manual license activation code
Use this option if you have obtained a license activation code from shadeBlue Support.

<http://www.shadeblue.com>

Press *Continue* to proceed.

Next, enter the email address used when purchasing the license, the provided license key, and optionally a company name.



Indigo Terminal Emulator
Version 3.0.145 (BETA)

shadeBlue, LLC.
Copyright © shadeBlue, LLC 2011

Register:

Email Address: (required)

License Key: (required)

(This license key is provided at time of purchase.)

Company Name: (optional)

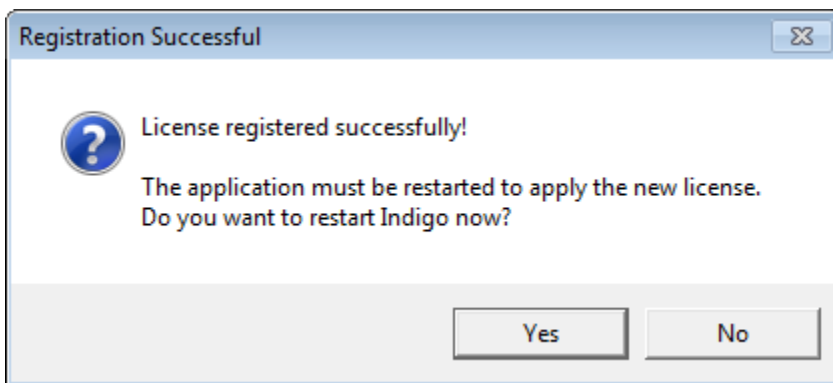
<http://www.shadeblue.com>

The *Continue* to perform the license registration.

Indigo will contact the licensing registration server via the Internet and complete the necessary licensing registration.



Once the license has been registered successfully, a confirmation message prompt will be displayed.



You will need to restart Indigo to complete the licensing registration.

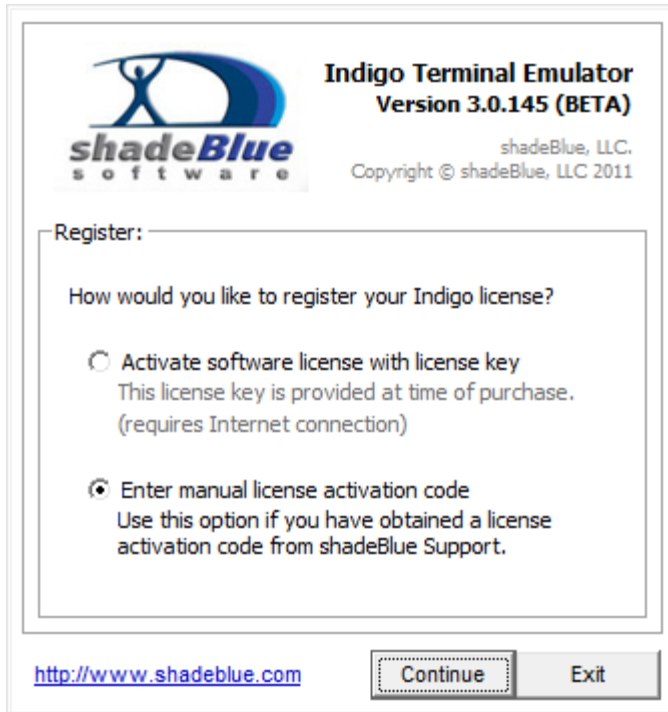
Option 2: Manual Registration

If the target system does not have an Internet connection or you received a license activation code from shadeBlue Support, then use the manual license registration option.

(Note: If you need to obtain a license activation code, please contact [shadeBlue Support](#))

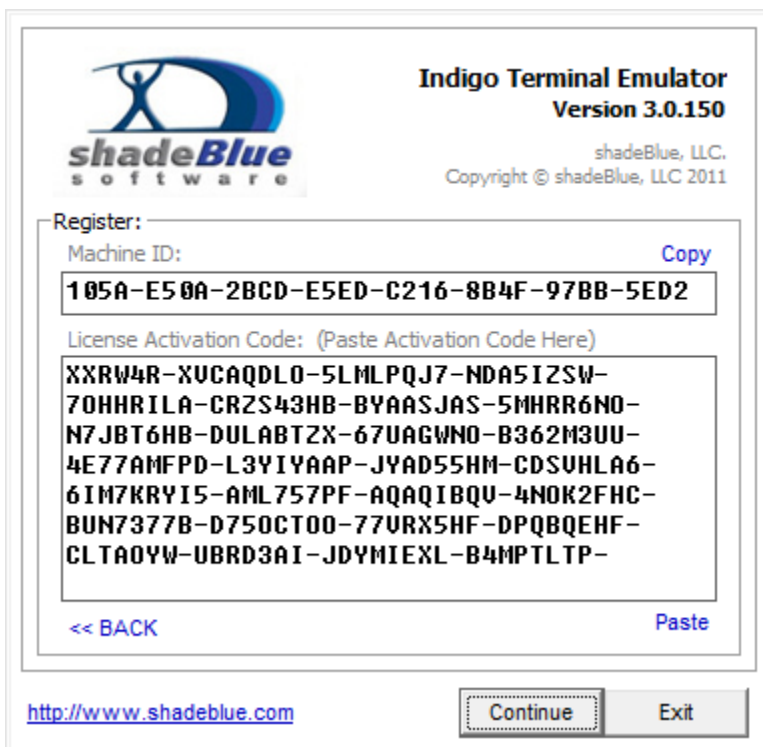
When prompted, select the second licensing option:

"Enter manual license activation code"



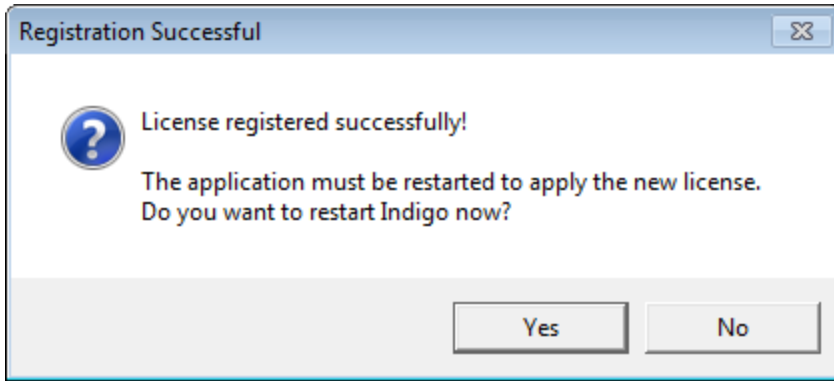
Press *Continue* to proceed.

Next, enter (*copy and paste*) the license activation code received from shadeBlue Support.



Click *Continue* to submit the license activation code.

Once the license has been registered successfully, a confirmation message prompt will be displayed.



You will need to restart Indigo to complete the licensing registration.