

# Licensing

This section describes the licensing terms for Indigo Terminal Emulator and the licensing activation/registration and transfer procedures.

- [Licensing Terms](#)
- [License Registration / Activation](#)
  - [Option 1: Online Registration](#)
  - [Option 2: Manual Registration](#)

## Licensing Terms

Indigo Terminal Emulator is licensed to each computer it is installed on.

A single license may only be installed on a single computer.

License transfer is available for hardware replacement and/or system upgrades.

## License Registration / Activation

### **Screencast**

A screencast of the licensing and activation procedure is available. [Click here to see the video.](#)

A quick and easy online registration method is included in Indigo.

Upon purchasing Indigo, an email will be automatically sent that includes a license key.

Once licensed, Indigo will provide full functionality and web update capabilities.

Indigo provides two options for activating your license:

- Online Registration
- Manual Registration

### Option 1: Online Registration

The easiest method is to use the online registration with license key option.

When prompted, select the first licensing option:

*"Activate software license with license key"*



**Indigo Terminal Emulator**  
Version 3.0.145 (BETA)

shadeBlue, LLC.  
Copyright © shadeBlue, LLC 2011

Register:

How would you like to register your Indigo license?

- Activate software license with license key  
This license key is provided at time of purchase.  
(requires Internet connection)
- Enter manual license activation code  
Use this option if you have obtained a license  
activation code from shadeBlue Support.

<http://www.shadeblue.com>

Press *Continue* to proceed.

Next, enter the email address used when purchasing the license, the provided license key, and optionally a company name.



**Indigo Terminal Emulator**  
Version 3.0.145 (BETA)

shadeBlue, LLC.  
Copyright © shadeBlue, LLC 2011

Register:

Email Address: (required)

License Key: (required)  
  
(This license key is provided at time of purchase.)

Company Name: (optional)

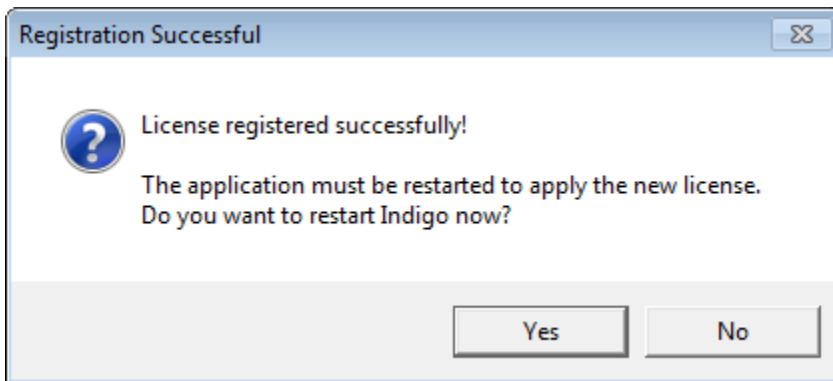
<http://www.shadeblue.com>

The *Continue* to perform the license registration.

Indigo will contact the licensing registration server via the Internet and complete the necessary licensing registration.



Once the license has been registered successfully, a confirmation message prompt will be displayed.



You will need to restart Indigo to complete the licensing registration.

## Option 2: Manual Registration

If the target system does not have an Internet connection or you received a license activation code from shadeBlue Support, then use the manual license registration option.

(Note: If you need to obtain a license activation code, please contact [shadeBlue Support](#))

When prompted, select the second licensing option:

*"Enter manual license activation code"*



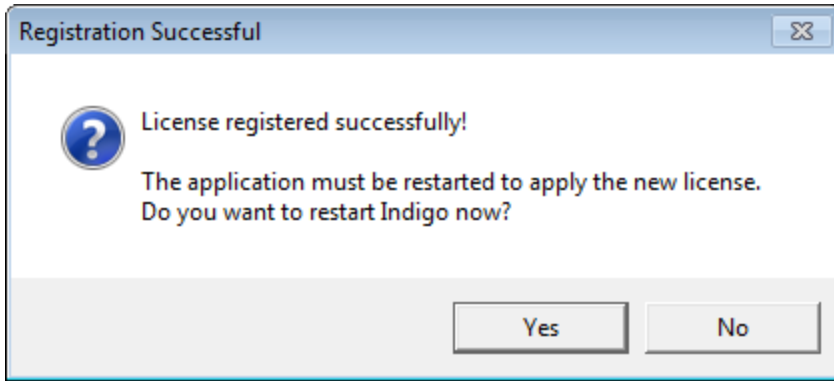
Press *Continue* to proceed.

Next, enter (*copy and paste*) the license activation code received from shadeBlue Support.



Click *Continue* to submit the license activation code.

Once the license has been registered successfully, a confirmation message prompt will be displayed.



You will need to restart Indigo to complete the licensing registration.